

## **EcoSearch Environmental Resources, Inc.**

8606 Allisonville Road, Suite 300  
Indianapolis, Indiana 46250  
ph: (317) 577-9797 fax: (317) 577-9191

### **EcoSearch Government Records Search**

<b>Type of Report:</b>	Priority Risk Report
<b>Site Location:</b>	<b>State Highway 30 From Tyner to Levi Tyner, KY 40486</b>
<b>Date:</b>	August 2, 2001
<b>Report ID Number:</b>	2538-7501
<b>Especially Prepared For:</b>	Mr. Tim Robinson Palmer Engineering Company

#### **Limits of Information:**

Customer proceeds at its own risk in choosing to rely on EcoSearch Environmental Resources, Inc. ("EcoSearch") services, in whole or in part, prior to proceeding with any transaction. EcoSearch cannot be an insurer of the accuracy of the information, errors occurring in the conversion of data, or for customer's use of the data. EcoSearch and its affiliated companies, officers, agents, employees, and independent contractors cannot be held liable for accuracy, storage, delivery, loss, or expense suffered by the customer resulting directly or indirectly from any information provided by EcoSearch Environmental Resources, Inc.

Thank you for choosing EcoSearch.

## Introduction

We want to thank you for your order requesting the enclosed site assessment.

EcoSearch makes every effort possible to combine the most accurate environmental data available into an understandable and easy-to-use format.

While every attempt has been made to ensure accuracy of the information presented, we cannot guarantee the accuracy of the data from the original sources, nor can we guarantee that no transcription or plotting errors have occurred.

If any concerns arise from your review of the databases in this report, please call the appropriate agency involved. As a service, we have included phone numbers in the database description section of this report to help you in your evaluation.

The enclosed maps present a working approximation of the location of surrounding environmental sites based primarily on available accurate site addresses. These maps should not be used for purposes more correctly handled by surveys.

EcoSearch is driven by its mission to present the most responsive, technically sound, and cost-effective environmental data services available to our customer.

## Read Me First

The following suggestions are offered in an attempt to help you in using and understanding this site assessment from EcoSearch:

1. Skim over the entire report to familiarize yourself with its contents and layout.
2. You will notice that the information is presented following this general concept: we begin by giving sections that summarize data and then give detailed information about these summaries as you proceed further into the report.
3. Then refer to the section titled "Statistical Overview". You will need to take a moment to read the column headings and the data below them. Also, as you go down the first column (left side) you will probably need to look back at the preceding section titled "Database Descriptions". Please pay particular attention to the radius searched as they vary according to the database. These are ASTM standards that we meet and exceed. Your site's datum is the third, shaded column. Also, the next column showing database hits within the first radius is important as it will include data about adjoining properties. The unmappable sites have their own section with a cover page explaining them.
4. The next section titled "Maps" is important as it gives a very clear visual presentation of the site, and which database(s) are at the site itself or within the study radii.
5. The site summary page(s) tells you by map ID# which database is at that location as well as the site's name and distance/direction from your study site. You will notice that the numbering corresponds to the distance from the subject site-- eg. #1 is your site itself or the site closest to it, #2 is further away. This continues until all database hits have been summarized within the largest study radius. Your report may extend further than one mile if you asked us to extend the radii.
6. As you will recall our format goes from summary-type pages to detailed information. Therefore, the next section is "Detailed Data". Here extensive data is given about each database hit. The map ID#, distance, and direction are in the top left corner. Further data follows.
7. The "Unmappable" section was referred to earlier. In this summary you will find those sites. Please read the cover page as it describes unmappable sites and our efforts to minimize and/or eliminate them from all of our site assessments.
8. The last two divisions -- "Radon" and "Glossary/Acronyms" are self-explanatory and often helpful to our customers.

If you would like further help in understanding our reports please call as our intention is to have this report helpful to you.



## Database Descriptions -- Federal Databases

### NPL

National Priorities List

US Environmental Protection Agency  
Office of Solid Waste and Emergency Response  
(703) 603-8881

Data Date: May 14, 2001  
Release Date: May 14, 2001  
Active Date: June 22, 2001  
Last Contact Date: June 22, 2001

The NPL is a subset of the CERCLIS and lists over 1,150 of the nation's most dangerous sites of uncontrolled or hazardous waste which require cleanup. Also known as the Superfund List, the sites are scored according to the hazardous ranking system.

### CERCLA (Active)

Comprehensive Environmental Response, Compensation, and Liability Information System (Active)

US Environmental Protection Agency  
Office of Solid Waste and Emergency Response  
1-800-775-5037

Data Date: May 14, 2001  
Release Date: May 14, 2001  
Active Date: June 22, 2001  
Last Contact Date: June 22, 2001

CERCLIS maintains information on over 15,000 sites nationally identified as hazardous or potentially hazardous which may require action. These sites are currently being investigated or an investigation has been completed regarding the release of hazardous substances. The most serious of this list as ranked by the hazardous ranking system are transferred to the NPL.

### CERCLA (NFRAP Archive)

Comprehensive Environmental Response, Compensation, and Liability Information System (NFRAP Archive)

US Environmental Protection Agency  
Office of Solid Waste and Emergency Response  
1-800-775-5037

Data Date: May 14, 2001  
Release Date: May 14, 2001  
Active Date: June 22, 2001  
Last Contact Date: June 22, 2001

For more complete information purposes we include sites which have been reclassified as No Further Remedial Action Planned (NFRAP) by the EPA. This action was taken by the EPA beginning February 1995 as a part of the Brownfields Redevelopment Program. These former CERCLIS sites, also known as the CERCLIS Archive, have been delisted because a lack of significant contamination was found.

### RCRA TSD

Resource Conservation and Recovery Information System -- Treatment, Storage, and Disposal Facilities

US Environmental Protection Agency  
Office of Solid Waste and Emergency Response  
(202) 260-4610

Data Date: June 15, 2000  
Release Date: June 15, 2000  
Active Date: June 18, 2001  
Last Contact Date: June 19, 2001

RCRIS contains information on hazardous waste handlers regulated by the US Environmental Protection Agency under the Resource Conservation and Recovery Act (RCRA). It is a national system used to track events and activities which fall under RCRA. The TSD database is a subset of the complete RCRIS file which includes facilities which treat, store, dispose, or incinerate hazardous waste. Additionally, compliance and corrective action (CORRACTS) information is included.

## RCRA Generator

Resource Conservation and Recovery Information System - Large and Small Quantity Generators, Transporters, and Notifiers

US Environmental Protection Agency  
Office of Solid Waste and Emergency Response  
800-424-9346

Data Date: June 20, 2000  
Release Date: June 20, 2000  
Active Date: June 19, 2001  
Last Contact Date: June 19, 2001

RCRIS contains information on hazardous waste handlers regulated by the US Environmental Protection Agency under the Resource Conservation and Recovery Act (RCRA). It is a national system used to track events and activities which fall under RCRA. The generators database is a subset of the complete RCRIS file which includes hazardous waste generators which create more than 100kg of hazardous waste per month or meet other requirements of RCRA. We also include RCRA Notifiers, Transporters, and formerly regulated RCRA Sites for more complete hazardous waste information. Additionally, compliance and corrective action information is included.

## RAATS

RCRA Administrative Action Tracking System

US Environmental Protection Agency  
Office of Enforcement and Compliance Assurance  
(202) 564-4104

Data Date: April 14, 1995  
Release Date: Not Available  
Active Date: April 17, 1995  
Last Contact Date: June 10, 2001

The RCRA Administrative Action Tracking System contains additional information on RCRA enforcement actions. Data includes the type of action, proposed penalty, and final penalty amount. This is a historical database and will not be updated by the source agency. EcoSearch will call once a year to verify historical status.

## CORRACTS

Resource Conservation and Recovery Information System -- Corrective Action Sites

US Environmental Protection Agency  
Office of Solid Waste and Emergency Response  
(202) 260-4610

Data Date: April 15, 2000  
Release Date: April 15, 2000  
Active Date: August 7, 2000  
Last Contact Date: June 1, 2001

The CORRACTS database includes RCRIS (Resource Conservation and Recovery Information System) sites with reported corrective action. This information is also reported in the standard RCRIS detailed data.

## ERNS

Emergency Response Notification System

US Environmental Protection Agency  
Office of Solid Waste and Emergency Response  
(202) 260-2342

Data Date: January 1, 2000  
Release Date: January 1, 2000  
Active Date: March 17, 2000  
Last Contact Date: June 1, 2001

ERNS is a national database which contains information on specific notification of releases of oil and hazardous substances into the environment. The system stores data regarding the site of the spill, the material released, and the medium into which it occurred.



## **PADS**

### PCB Activity Database System

US Environmental Protection Agency  
Office of Pollution Prevention and Toxics  
(202) 260-3992

Data Date: November 20, 1999  
Release Date: November 20, 1999  
Active Date: February 18, 2000  
Last Contact Date: June 19, 2001

This database stores information about facilities which handle PCBs and file EPA form 7710-53. It is divided into storage facilities, disposers, generators, and transporters.

## **TRI**

### Toxic Release Inventory

US Environmental Protection Agency  
Office of Pollution Prevention and Toxics  
(202) 260-1531

Data Date: October 1997  
Release Date: November 2000  
Active Date: March 17, 2000  
Last Contact Date: June 19, 2001

TRI contains information from facilities which manufacture, process, or import any of the over 300 listed toxic chemicals which are released directly into air, water, or land or are transported off-site. The database includes facts on amounts of chemicals stored and emitted from the facility. This database is released on an infrequent basis by the US EPA. EcoSearch includes information from 1987 through the 1996 reporting year.

## **SSTS**

### Section Seven Tracking System

US Environmental Protection Agency  
Office of Prevention, Pesticides, and Toxic Substances  
(202) 564-5008

Data Date: July 31, 1998  
Release Date: Not Available  
Active Date: August 27, 1998  
Last Contact Date: June 10, 2001

Formerly FATES, this system tracks the registration of pesticide-producing establishments and tracks the types and amounts of pesticides, active ingredients, and devices which are sold, produced, or distributed annually.

## **DOCKET**

### Civil Enforcement Docket

US Environmental Protection Agency  
Office of Enforcement  
(202) 564-4114

Data Date: September 3, 1998  
Release Date: Not Available  
Active Date: February 3, 1999  
Last Contact Date: June 19, 2001

The Civil Enforcement Docket is information on civil and administrative actions filed by the Department of Justice for the US Environmental Protection Agency. This record has been continually updated since 1972 and includes data regarding facility name, dates, laws violated, and penalties assessed.

## **TSCA**

### Toxic Substances Control Act Inventory

US Environmental Protection Agency  
  
(202) 554-1404

Data Date: May 14, 1986  
Release Date: Not Available  
  
Last Contact Date: June 10, 2001

The Toxic Substances Control Act Inventory includes the locations and chemical production information of more than 7000 processors and manufacturers of chemicals. This database is no longer released to the public by the US EPA.

## Database Descriptions -- State Databases

### **LEAD (HWS)**

#### Kentucky Lead (State Superfund) List

Kentucky Department for Environmental Protection  
Waste Management / Superfund Branch  
(800) 928-4273

Data Date: October 31, 2000  
Release Date: October 31, 2000  
Active Date: January 11, 2001  
Last Contact Date: July 20, 2001

The Kentucky Lead list contains State Superfund sites that are under investigation or under remediation by the Commonwealth of Kentucky.

### **SWF**

#### Kentucky Solid Waste Facilities List

Kentucky Department for Environmental Protection  
Solid Waste Branch  
(800) 928-4273

Data Date: September 30, 1999  
Release Date: September 30, 1999  
Active Date: December 8, 1999  
Last Contact Date: July 20, 2001

The Kentucky Solid Waste Branch Landfill list contains information on permitted landfill operations in the Commonwealth of Kentucky.

### **UST**

#### Kentucky Underground Storage Tank List

Kentucky Department for Environmental Protection  
Underground Storage Tank Branch  
(800) 928-4273

Data Date: April 10, 2001  
Release Date: April 10, 2001  
Active Date: April 12, 2001  
Last Contact Date: July 20, 2001

The Kentucky Underground Storage Tank List includes information on facilities, tanks, and owners of UST sites in the Commonwealth of Kentucky.

# EcoSearch Statistical Overview

Property Information	
From Tyner to Levi Tyner, KY 40486	
Latitude: 37.415459 N	Longitude: 83.803953 W

Search Parameters	
Report:	Priority Risk Report
Radii:	ASTM*
Zip Code(s):	40486 40447 41386 41314
City:	Tyner Mc Kee Vincent Booneville
County:	Jackson Owsley

FEDERAL DATABASES	Radius (miles)	Mappable Sites						Unmappable Sites		
		Total	Site	Area Vicinity**	within 0.50mi	0.50 - 0.00mi	0.00 - 0.00mi	Zip Code	City	County
NPL	0.500	0	0	0	0	-	-	0	0	0
CERCLA (Active)	0.500	0	0	0	0	-	-	0	0	0
CERCLA (NFRAP Archive)	0.500	0	0	0	0	-	-	0	0	0
RCRA TSD	0.500	0	0	0	0	-	-	0	0	0
RCRA Generator	0.500	1	0	1	0	-	-	0	0	0
CORRACTS	0.500	0	0	0	0	-	-	0	0	0
ERNS	0.500	0	0	0	0	-	-	-	-	-
PADS	0.500	0	0	0	0	-	-	0	-	-
TRI	0.500	0	0	0	0	-	-	0	0	0
SSTS	0.500	0	0	0	0	-	-	0	0	0
DOCKET	0.500	0	0	0	0	-	-	0	0	0
TSCA	0.500	0	0	0	0	-	-	0	-	-

STATE DATABASES	Radius (miles)	Mappable Sites						Unmappable Sites		
		Total	Site	Area Vicinity**	within 0.50mi	0.50 - 0.00mi	0.00 - 0.00mi	Zip Code	City	County
LEAD (HWS)	0.500	0	0	0	0	-	-	0	0	0
SWF	0.500	0	0	0	0	-	-	1	0	0
UST	0.500	2	0	2	0	-	-	0	0	0

**MANUAL GEOCODING:** ^ For this city/township, **8** sites were manually plotted by EcoSearch.

\* This database search and study radii meets or exceeds the ASTM (American Society of Testing and Materials) standards for a government records review.

\*\* Area Vicinity indicates that Environmental Area Records were found near your study site. These records detail contamination or other environmental conditions in a wide area which cannot be placed to a single point or more precisely plotted. More research is necessary to determine the possible environmental impact of these Area Records to your study site.

^ Manual Geocoding: Plotting environmental site data using paper maps and phone calls to properly place the information on the map.

Accurate street addresses are required for records to be found at the study property.

Mappable Sites are environmental sites which were located and appear on the enclosed EcoSearch Map, Site Summary, and Detailed Data sections of the report. These sites are summarized based on proximity to the study site.

Unmappable Sites are governmental records with incomplete or inaccurate address information. These sites could not be located on the street map, but have been searched by the Zip Codes, Cities, and County specified in the search parameters. Further investigation of these sites and their relationship to your study site is necessary.

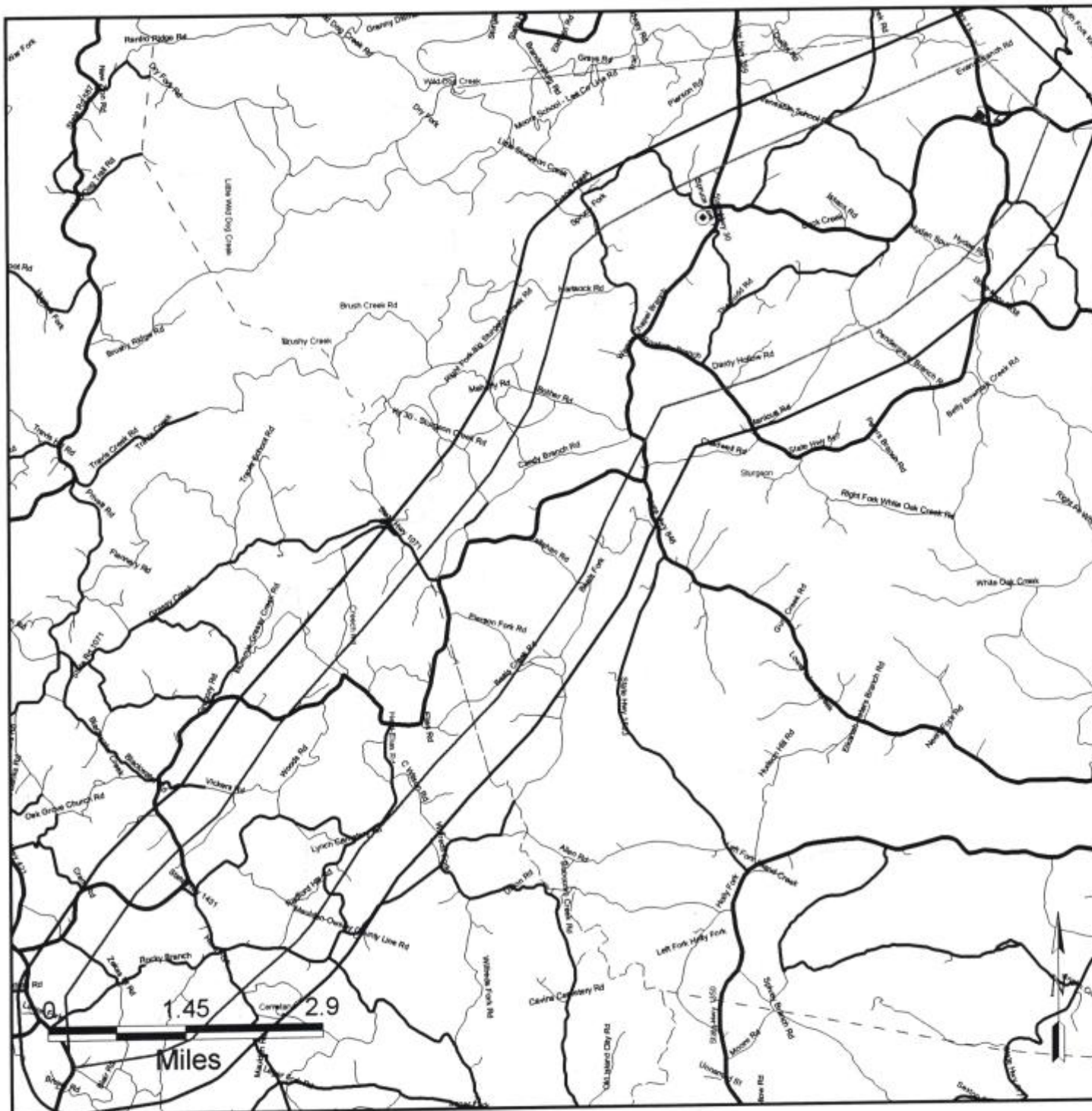


# EcoSearch Environmental Resources, Inc.

## Priority Risk Report Map

Report ID: 2538-7501

Site: From Tyner to Levi  
Tyner, KY 40486



Study Area

FEDERAL DATABASES		Radius (mi)
■	NPL Sites	0.50
▣	CERCLA (Active) Sites	0.50
▤	CERCLA (NFRAP Archive) Sites	0.50
▲	RCRA TSD Sites	0.50
△	RCRA Generator Sites	0.50
◆	CORRACTS Sites	0.50
▼	ERNS Sites	0.50
●	PADS Sites	0.50
+	TRI Sites	0.50
★	SSTS Sites	0.50
●	DOCKET Sites	0.50
▼	TSCA Sites	0.50

STATE DATABASES		Radius (mi)
■	LEAD (HWS) Sites	0.50
◆	SWF Sites	0.50
◆	UST Sites	0.50

**MULTIPLE MATCHES / AREAS**

- ⊙ Two Database Matches
- ⊙ Three or More Matches
- ▨ Database Area Site

**MAP LEGEND**

■	Parks	—	Streets
□	Incorp. Areas	—	Secondary Roads
■	Water	—	Primary Roads
□	Cemeteries	—	Freeways
		+	Railroads
		- - -	Boundaries

**Radii: 0.50 mile**

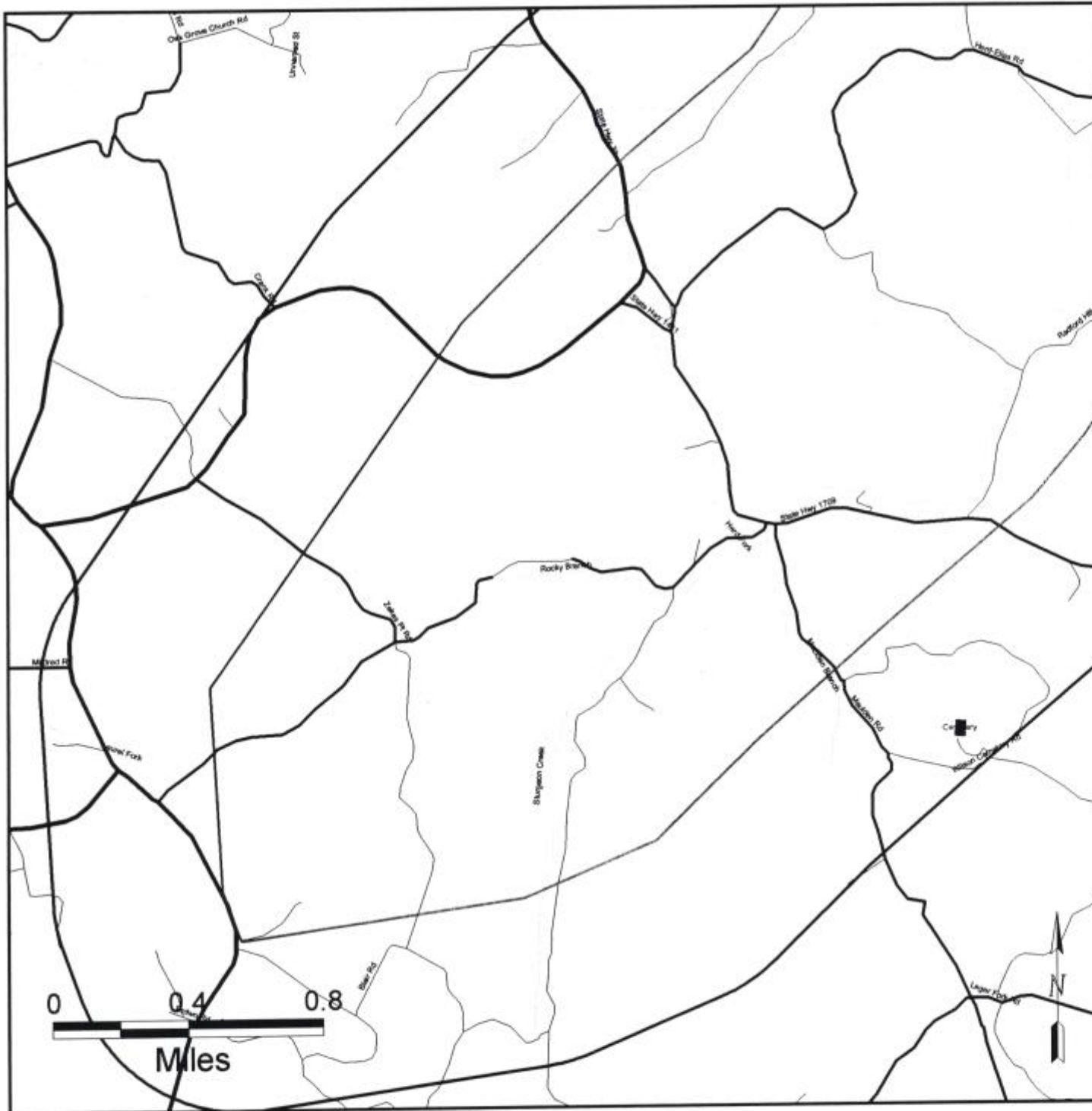
Note: The information contained on this map is subject to the general disclaimer on the first page.

# EcoSearch Environmental Resources, Inc.

## Priority Risk Report Map

Report ID: 2538-7501

Site: From Tyner to Levi  
Tyner, KY 40486



Study Area

### FEDERAL DATABASES Radius (mi)

■	NPL Sites	0.50
■	CERCLA (Active) Sites	0.50
■	CERCLA (NFRAP Archive) Sites	0.50
▲	RCRA TSD Sites	0.50
▲	RCRA Generator Sites	0.50
◆	CORRACTS Sites	0.50
▼	ERNS Sites	0.50
●	PADS Sites	0.50
+	TRI Sites	0.50
★	SSTS Sites	0.50
●	DOCKET Sites	0.50
▼	TSCA Sites	0.50

### STATE DATABASES

■	LEAD (HWS) Sites	0.50
◆	SWF Sites	0.50
◆	UST Sites	0.50

### MULTIPLE MATCHES / AREAS

- ⊕ Two Database Matches
- ⊕ Three or More Matches
- Database Area Site

### MAP LEGEND

	Parks		Streets
	Incorp. Areas		Secondary Roads
	Water		Primary Roads
	Cemeteries		Freeways
			Railroads
			Boundaries

Radii: 0.50 mile

Note: The information contained on this map is subject to the general disclaimer on the first page.

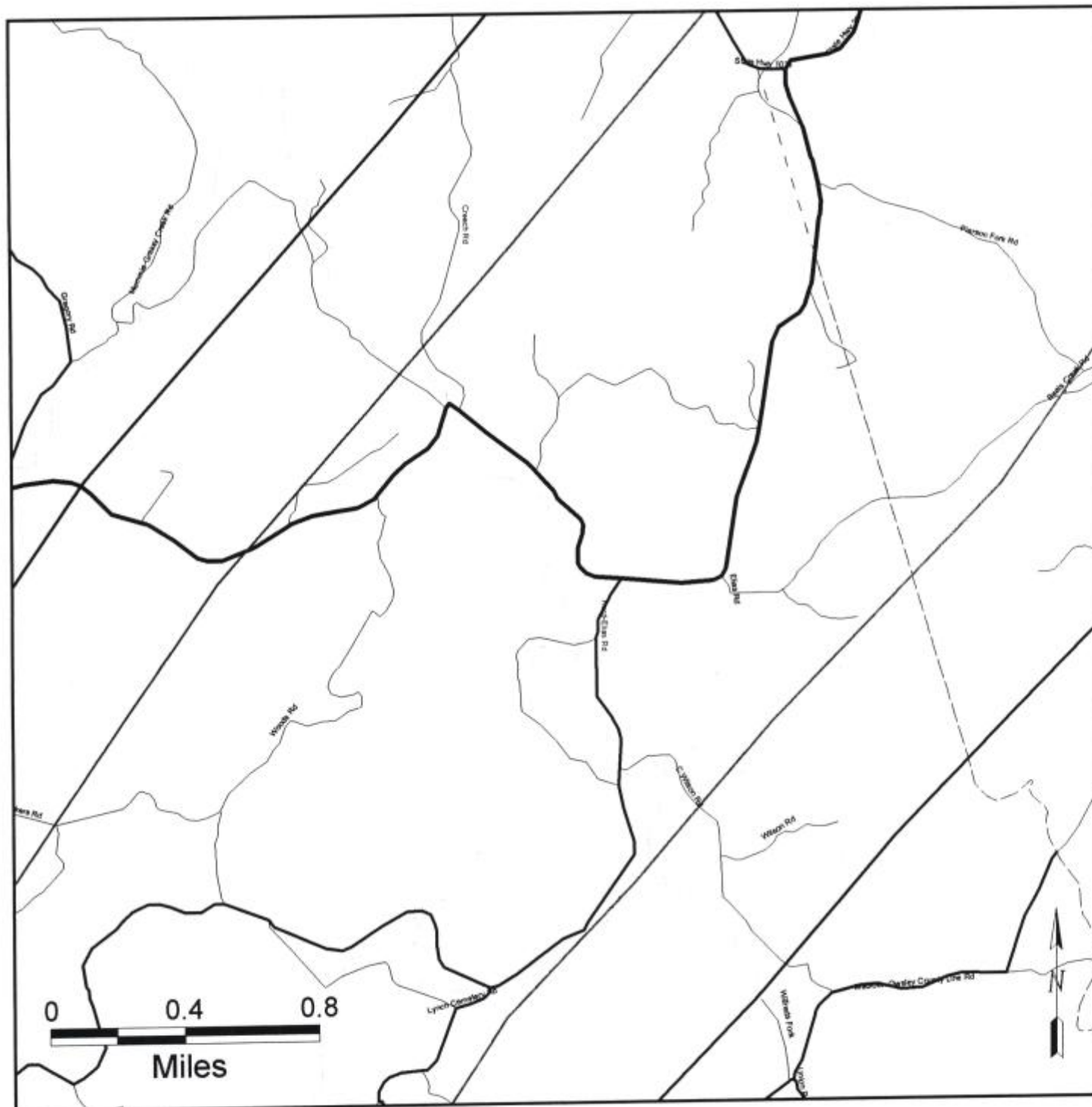


# EcoSearch Environmental Resources, Inc.

## Priority Risk Report Map

Report ID: 2538-7501

Site: From Tyner to Levi  
Tyner, KY 40486



Study Area

### FEDERAL DATABASES Radius (mi)

■	NPL Sites	0.50
■	CERCLA (Active) Sites	0.50
■	CERCLA (NFRAP Archive) Sites	0.50
▲	RCRA TSD Sites	0.50
▲	RCRA Generator Sites	0.50
◆	CORRACTS Sites	0.50
▼	ERNS Sites	0.50
●	PADS Sites	0.50
+	TRI Sites	0.50
★	SSTS Sites	0.50
●	DOCKET Sites	0.50
▼	TSCA Sites	0.50

### STATE DATABASES

■	LEAD (HWS) Sites	0.50
◆	SWF Sites	0.50
◆	UST Sites	0.50

### MULTIPLE MATCHES / AREAS

- ⊙ Two Database Matches
- ⊙ Three or More Matches
- ▨ Database Area Site

### MAP LEGEND

■	Parks	—	Streets
□	Incorp. Areas	—	Secondary Roads
■	Water	—	Primary Roads
□	Cemeteries	—	Freeways
		+++	Railroads
		- - -	Boundaries

Radii: 0.50 mile

Note: The information contained on this map is subject to the general disclaimer on the first page.

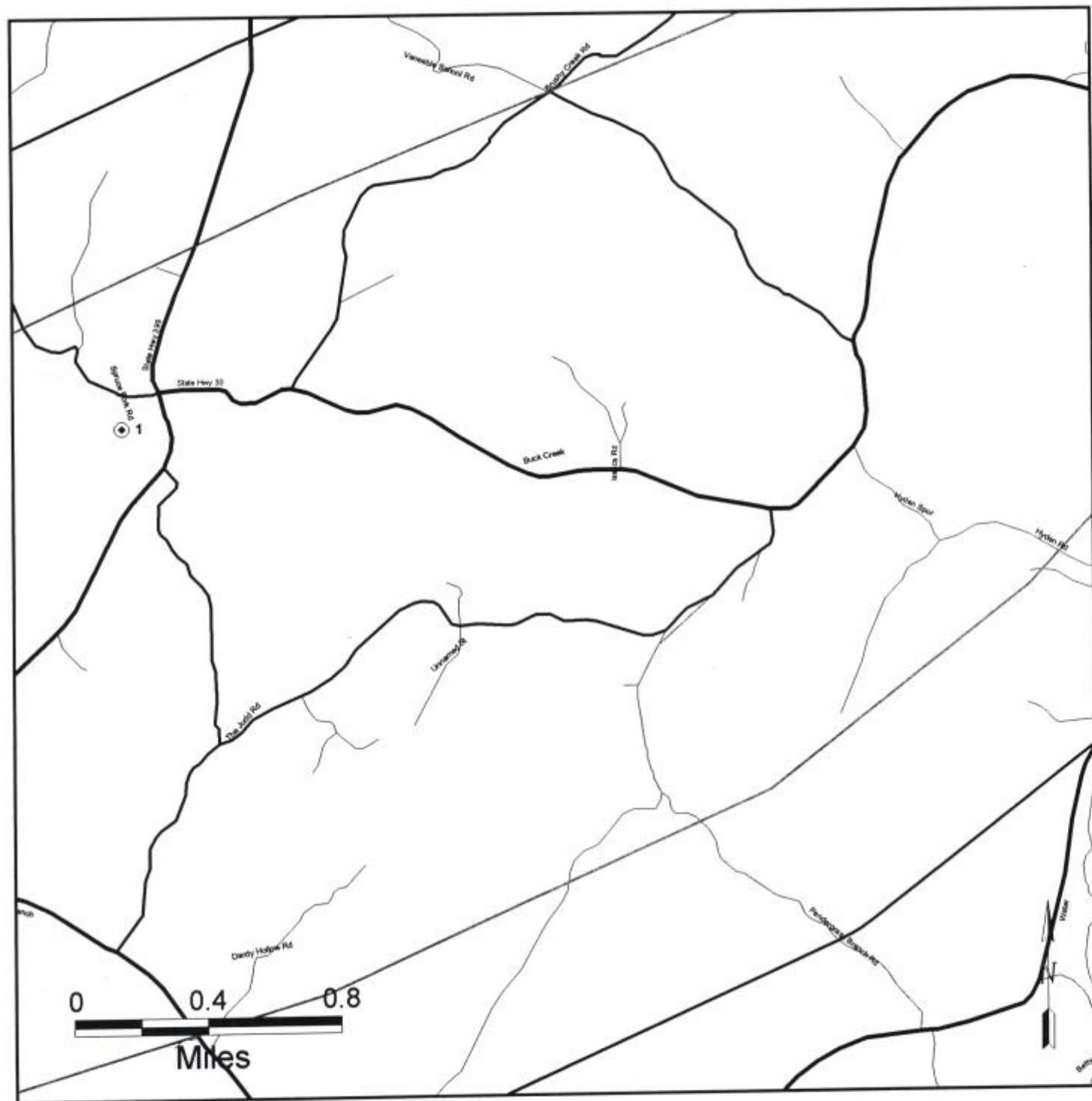




# EcoSearch Environmental Resources, Inc.

## Priority Risk Report Map

Report ID: 2538-7501  
Site: From Tyner to Levi  
Tyner, KY 40486



Study Area

---

**FEDERAL DATABASES**      **Radius (mi)**

- NPL Sites      0.50
- CERCLA (Active) Sites      0.50
- CERCLA (NFRAP Archive) Sites      0.50
- ▲ RCRA TSD Sites      0.50
- ▲ RCRA Generator Sites      0.50
- ◆ CORRACTS Sites      0.50
- ▼ ERNS Sites      0.50
- PADS Sites      0.50
- ✚ TRI Sites      0.50
- ★ SSTS Sites      0.50
- DOCKET Sites      0.50
- ▼ TSCA Sites      0.50

**STATE DATABASES**

- LEAD (HWS) Sites      0.50
- ◆ SWF Sites      0.50
- ◆ UST Sites      0.50

**MULTIPLE MATCHES / AREAS**

- ⊙ Two Database Matches
- ⊙ Three or More Matches
- ▨ Database Area Site

---

**MAP LEGEND**

■ Parks	— Streets
□ Incorp. Areas	— Secondary Roads
■ Water	— Primary Roads
□ Cemeteries	— Freeways
	+++ Railroads
	- - - Boundaries

**Radii: 0.50 mile**

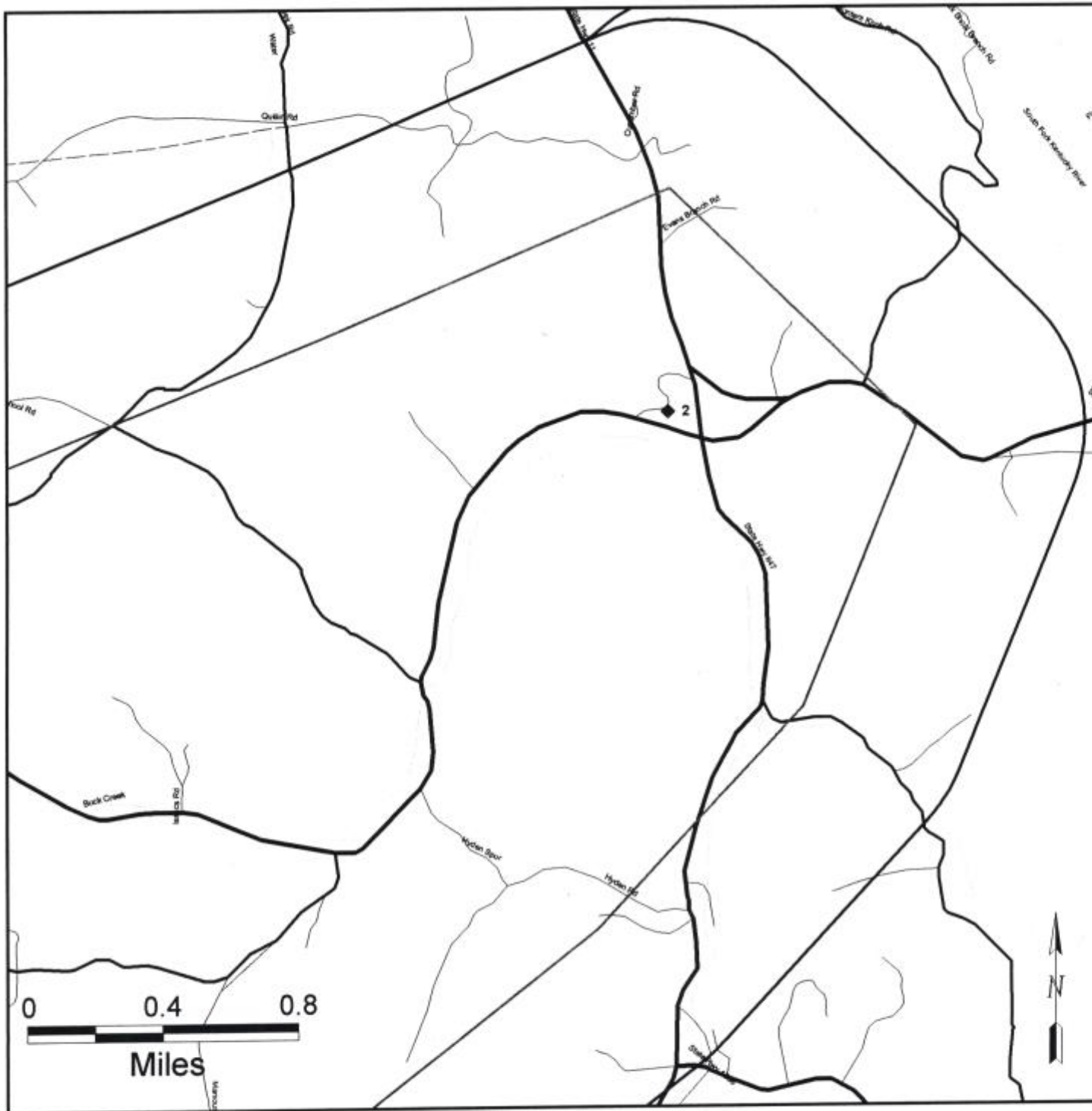
Note: The information contained on this map is subject to the general disclaimer on the first page.

# EcoSearch Environmental Resources, Inc.

## Priority Risk Report Map

Report ID: 2538-7501

Site: From Tyner to Levi  
Tyner, KY 40486



Study Area

### FEDERAL DATABASES Radius (mi)

■	NPL Sites	0.50
■	CERCLA (Active) Sites	0.50
■	CERCLA (NFRAP Archive) Sites	0.50
▲	RCRA TSD Sites	0.50
▲	RCRA Generator Sites	0.50
◆	CORRACTS Sites	0.50
▼	ERNS Sites	0.50
●	PADS Sites	0.50
+	TRI Sites	0.50
★	SSTS Sites	0.50
●	DOCKET Sites	0.50
▼	TSCA Sites	0.50

### STATE DATABASES

■	LEAD (HWS) Sites	0.50
◆	SWF Sites	0.50
◆	UST Sites	0.50

### MULTIPLE MATCHES / AREAS

- ⊙ Two Database Matches
- ⊙ Three or More Matches
- Database Area Site

### MAP LEGEND

	Parks		Streets
	Incorp. Areas		Secondary Roads
	Water		Primary Roads
	Cemeteries		Freeways
			Railroads
			Boundaries

Radii: 0.50 mile

Note: The information contained on this map is subject to the general disclaimer on the first page.



# EcoSearch Environmental Resources, Inc.

## USGS 7.5 Minute Topographical Map

Report ID: 2538-7501  
Site: From Tyner to Levi  
Tyner, KY 40486

○ Target Area

### Map Features are Color Coded

Black -- Cultural features such as roads and buildings.

Blue -- Hydrographic features such as lakes and rivers.

Brown -- Hypsographic (elevation) features shown by contour lines.

Green -- Woodland cover, scrub, orchards, and vineyards.

Red -- Important roads and public land survey system.

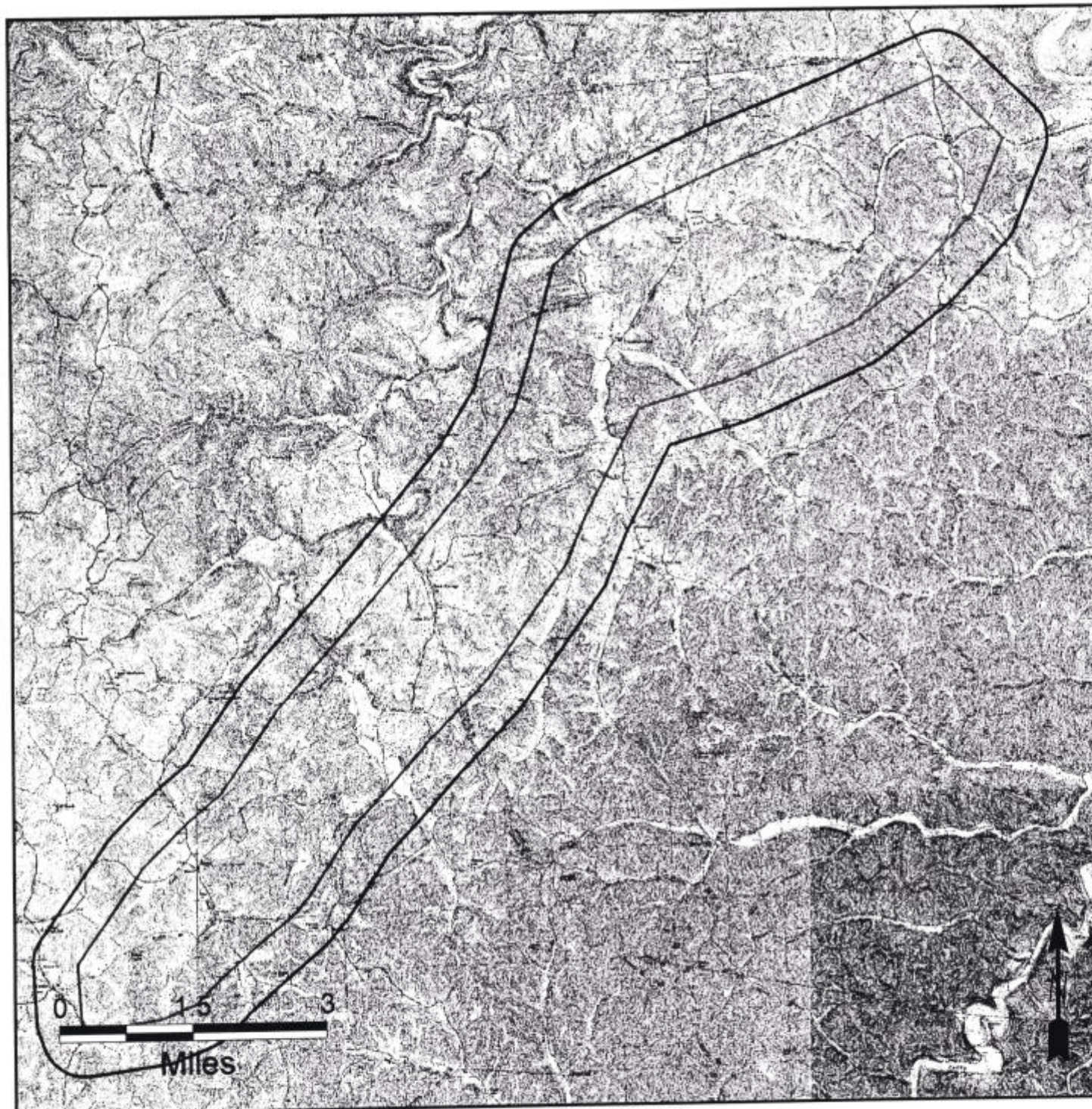
Purple -- Features added from aerial photographs during map revision.  
The changes are not field checked.

A detailed Topographic Map Symbols pamphlet is available from EcoSearch free upon request.

Radii: 0.25 mile, 0.50 mile, 1.00 mile

### Topographical Map:

Sturgeon, KY -- 1953  
Photoinspected 1976



Source: United States Geological Survey, 7.5 minute Topographic Map (Digital Raster Graphics)



# EcoSearch Environmental Resources, Inc.

## USGS 7.5 Minute Topographical Map

Report ID: 2538-7501

Site: From Tyner to Levi  
Tyner, KY 40486

○ Target Area

### Map Features are Color Coded

Black -- Cultural features such as roads and buildings.

Blue -- Hydrographic features such as lakes and rivers.

Brown -- Hypsographic (elevation) features shown by contour lines.

Green -- Woodland cover, scrub, orchards, and vineyards.

Red -- Important roads and public land survey system.

Purple -- Features added from aerial photographs during map revision. The changes are not field checked.

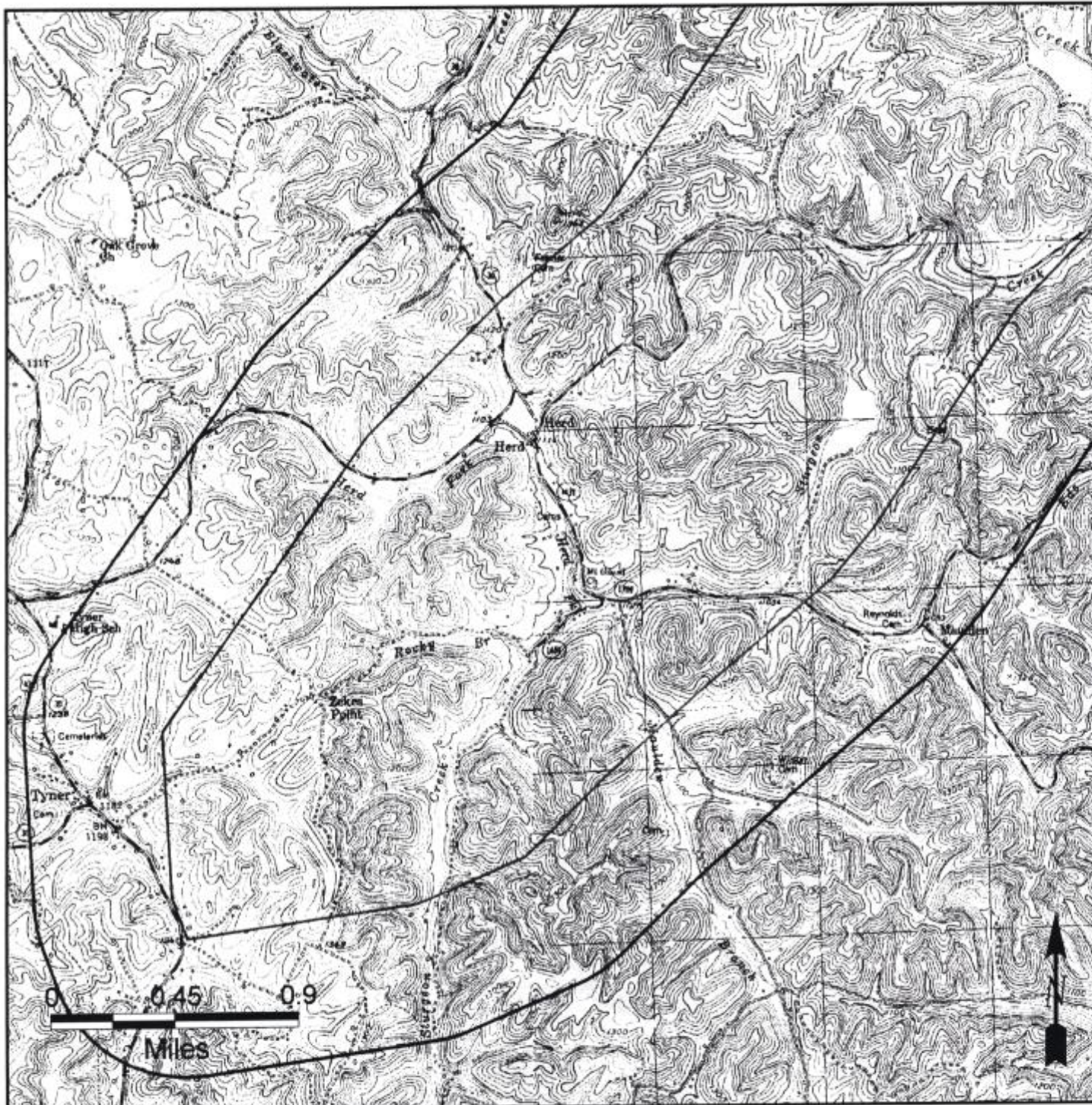
A detailed Topographic Map Symbols pamphlet is available from EcoSearch free upon request.

Radii: 0.25 mile, 0.50 mile, 1.00 mile

Topographical Map:

Sturgeon, KY -- 1953

Photoinspected 1976



Source: United States Geological Survey, 7.5 minute Topographic Map (Digital Raster Graphics)



# EcoSearch Environmental Resources, Inc.

## USGS 7.5 Minute Topographical Map

Report ID: 2538-7501

Site: From Tyner to Levi  
Tyner, KY 40486

○ Target Area

### Map Features are Color Coded

Black -- Cultural features such as roads and buildings.

Blue -- Hydrographic features such as lakes and rivers.

Brown -- Hypsographic (elevation) features shown by contour lines.

Green -- Woodland cover, scrub, orchards, and vineyards.

Red -- Important roads and public land survey system.

Purple -- Features added from aerial photographs during map revision. The changes are not field checked.

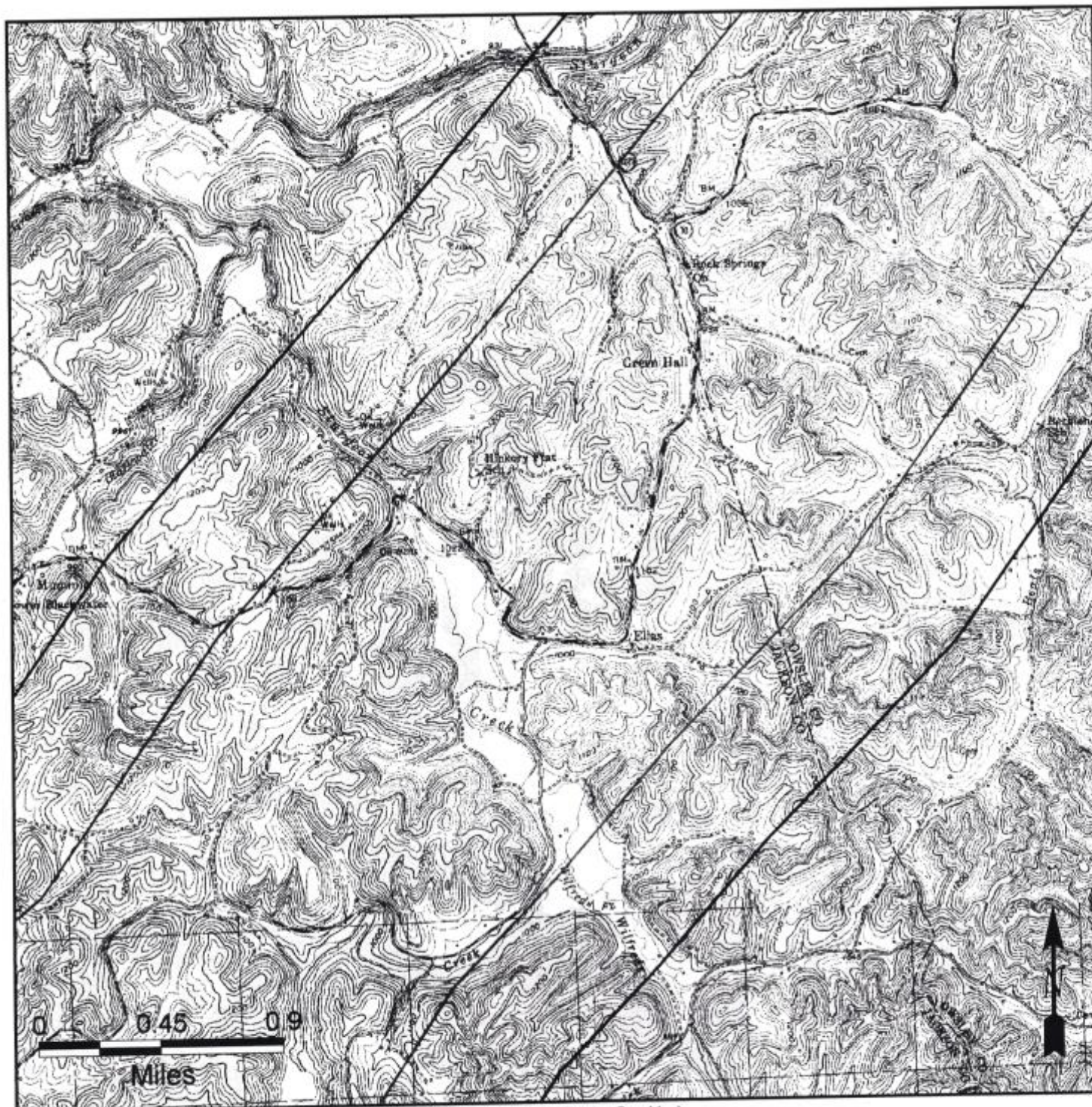
A detailed Topographic Map Symbols pamphlet is available from EcoSearch free upon request.

Radii: 0.25 mile, 0.50 mile, 1.00 mile

### Topographical Map:

Sturgeon, KY -- 1953

Photoinspected 1976



Source: United States Geological Survey, 7.5 minute Topographic Map (Digital Raster Graphics)



# EcoSearch Environmental Resources, Inc.

## USGS 7.5 Minute Topographical Map

Report ID: 2538-7501

Site: From Tyner to Levi  
Tyner, KY 40486

Target Area

### Map Features are Color Coded

Black -- Cultural features such as roads and buildings.

Blue -- Hydrographic features such as lakes and rivers.

Brown -- Hypsographic (elevation) features shown by contour lines.

Green -- Woodland cover, scrub, orchards, and vineyards.

Red -- Important roads and public land survey system.

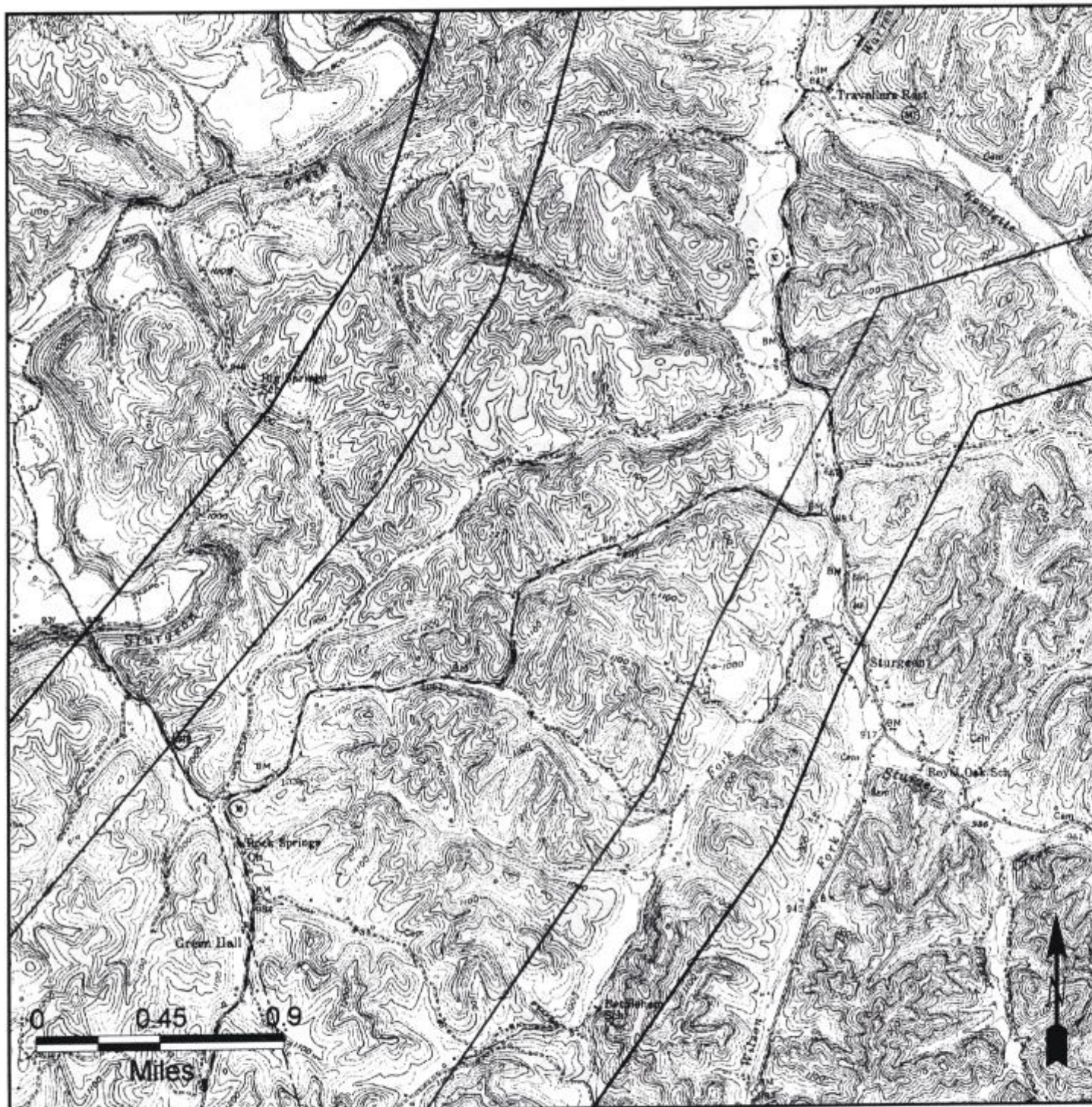
Purple -- Features added from aerial photographs during map revision.  
The changes are not field checked.

A detailed Topographic Map Symbols pamphlet is available from EcoSearch free upon request.

Radii: 0.25 mile, 0.50 mile, 1.00 mile

### Topographical Map:

**Sturgeon, KY -- 1953  
Photoinspected 1976**



Source: United States Geological Survey, 7.5 minute Topographic Map (Digital Raster Graphics)



# EcoSearch Environmental Resources, Inc.

## USGS 7.5 Minute Topographical Map

Report ID: 2538-7501

Site: From Tyner to Levi  
Tyner, KY 40486

○ Target Area

### Map Features are Color Coded

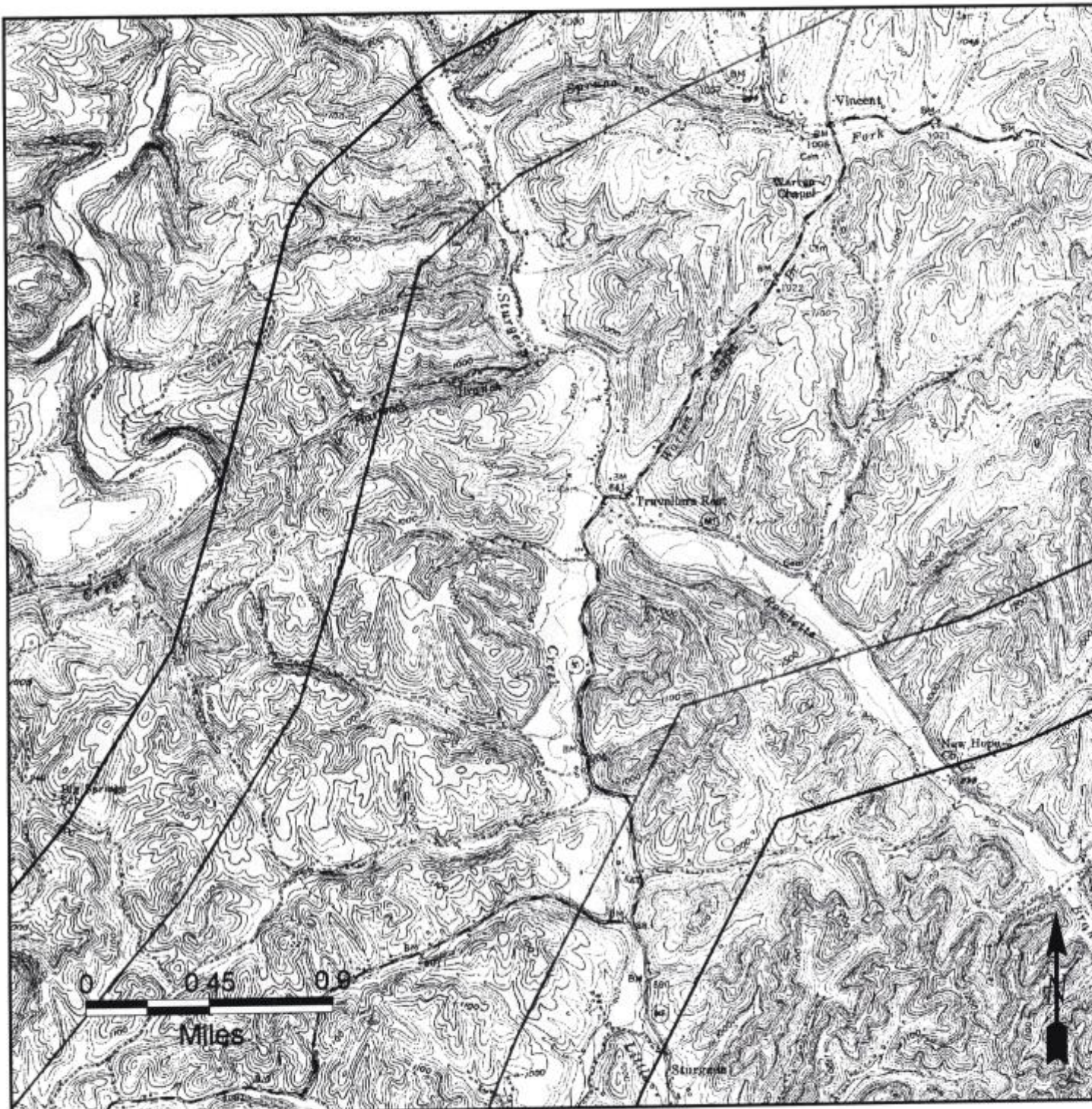
- Black -- Cultural features such as roads and buildings.
- Blue -- Hydrographic features such as lakes and rivers.
- Brown -- Hypsographic (elevation) features shown by contour lines.
- Green -- Woodland cover, scrub, orchards, and vineyards.
- Red -- Important roads and public land survey system.
- Purple -- Features added from aerial photographs during map revision. The changes are not field checked.

A detailed Topographic Map Symbols pamphlet is available from EcoSearch free upon request.

Radii: 0.25 mile, 0.50 mile, 1.00 mile

### Topographical Map:

Sturgeon, KY -- 1953  
Photoinspected 1976



Source: United States Geological Survey, 7.5 minute Topographic Map (Digital Raster Graphics)



# EcoSearch Environmental Resources, Inc.

## USGS 7.5 Minute Topographical Map

Report ID: 2538-7501

Site: From Tyner to Levi  
Tyner, KY 40486

○ Target Area

### Map Features are Color Coded

Black -- Cultural features such as roads and buildings.

Blue -- Hydrographic features such as lakes and rivers.

Brown -- Hypsographic (elevation) features shown by contour lines.

Green -- Woodland cover, scrub, orchards, and vineyards.

Red -- Important roads and public land survey system.

Purple -- Features added from aerial photographs during map revision.  
The changes are not field checked.

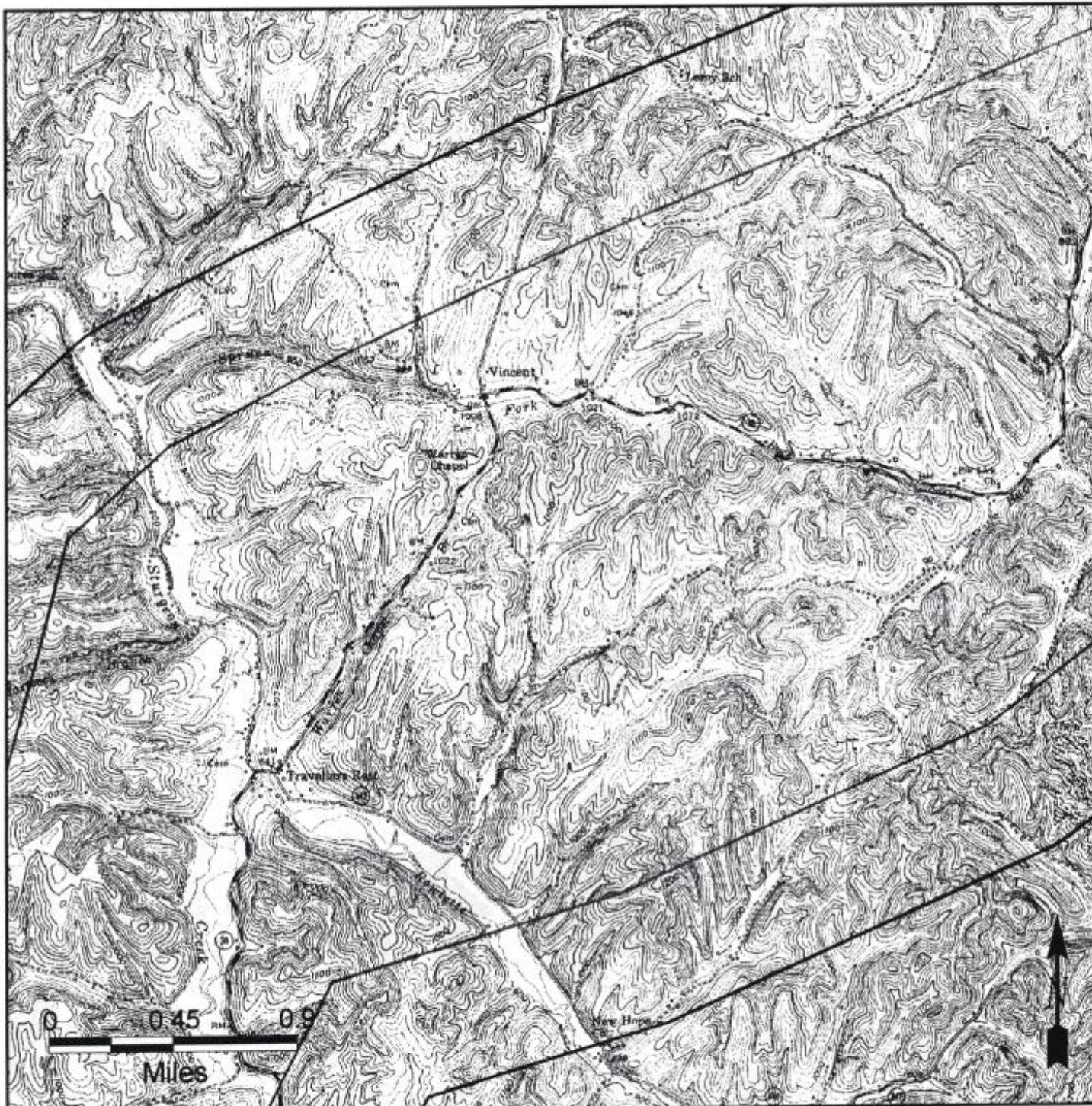
A detailed Topographic Map Symbols pamphlet is available from EcoSearch free upon request.

Radii: 0.25 mile, 0.50 mile, 1.00 mile

### Topographical Map:

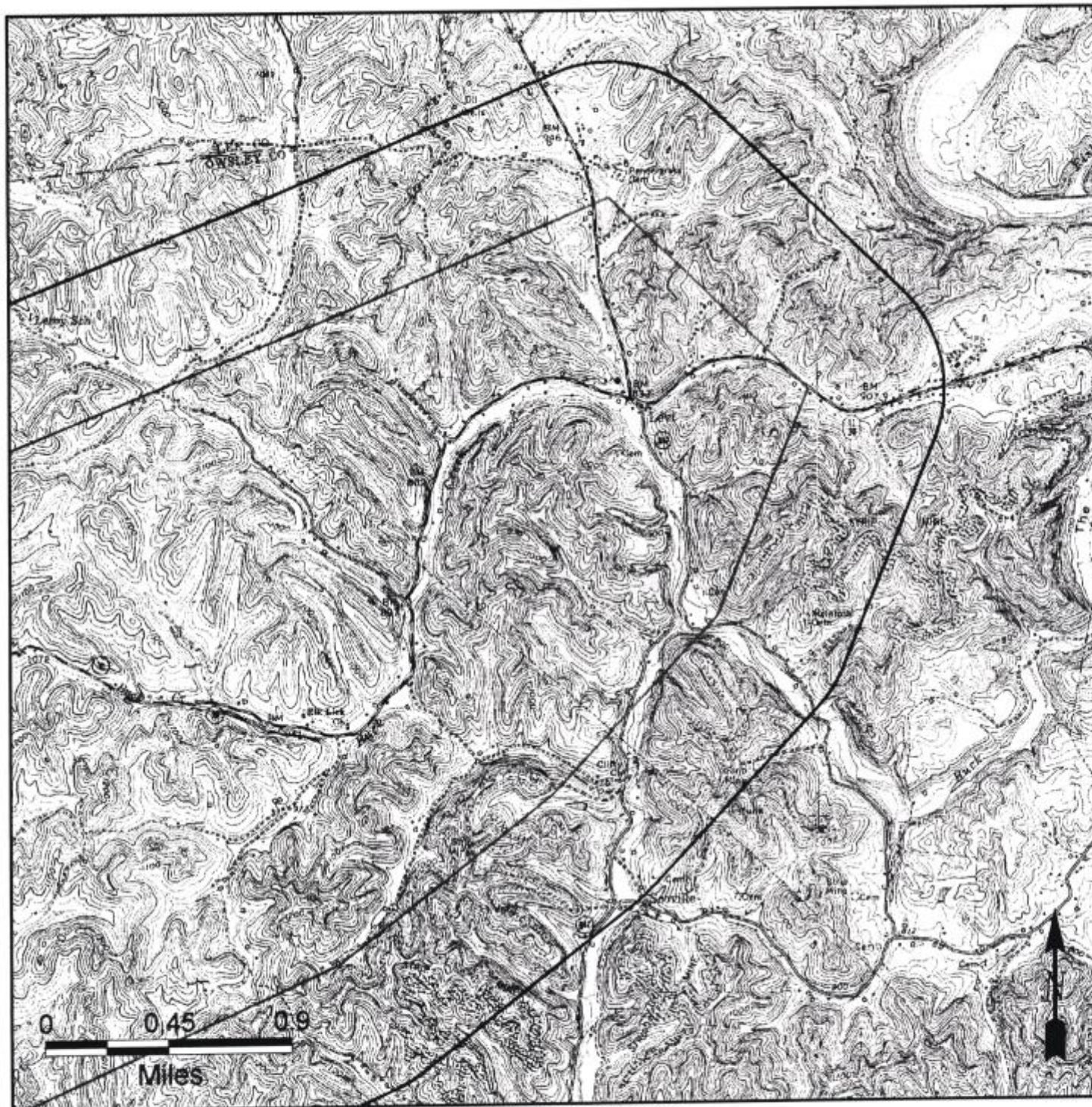
Sturgeon, KY -- 1953

Photoinspected 1976



Source: United States Geological Survey, 7.5 minute Topographic Map (Digital Raster Graphics)





# EcoSearch Environmental Resources, Inc.

## USGS 7.5 Minute Topographical Map

Report ID: 2538-7501  
Site: From Tyner to Levi  
Tyner, KY 40486

○ Target Area

### Map Features are Color Coded

Black -- Cultural features such as roads and buildings.

Blue -- Hydrographic features such as lakes and rivers.

Brown -- Hypsographic (elevation) features shown by contour lines.

Green -- Woodland cover, scrub, orchards, and vineyards.

Red -- Important roads and public land survey system.

Purple -- Features added from aerial photographs during map revision. The changes are not field checked.

A detailed Topographic Map Symbols pamphlet is available from EcoSearch free upon request.

Radii: 0.25 mile, 0.50 mile, 1.00 mile

Topographical Map:  
Sturgeon, KY -- 1953  
Photoinspected 1976



## Site Summary

<u>Map ID#</u>	<u>Database / Agency ID#</u>	<u>Site Name, Address, and County</u>	<u>Distance/Direction</u>
1A	RCRA Generator RCRA Notifier Site KYR000017889	BO'S GROCERY ROUTE 30 BOONEVILLE, KY 41314 OWSLEY	0.00000 mi - <b>Manually Geocoded*</b>
1B	UST Kentucky Underground Storage Tank 1202095	BO'S GROCERY HWY 30 VINCENT, KY 41386 OWSLEY	0.00000 mi - <b>Manually Geocoded*</b>
2	UST Kentucky Underground Storage Tank 9999652	ROBERTS PROPERTY HWY 30 BOONEVILLE, KY 41314 OWSLEY	0.00000 mi - <b>Manually Geocoded*</b>

- \* -- Manually Geocoded: Site plotted or corrected using paper maps, phone calls, and other resources to properly place the site on the map.
- \*\* -- Agency Provided Lat/Long: Site plotted using the latitude and longitude given by the federal or state government agency.
- \*\*\* -- Area Manually Plotted: Area manually drawn using digital and paper maps.



## Detailed Data

The following pages contain the detailed data concerning the sites plotted on the map and included in the site summary.

**Please Note:** Pages are not included for databases not found within the search radii.

These pages are arranged as follows:

RCRA TSD and Generators Data

Kentucky UST Data



# RCRA TSD and Generators Data

## Facility and Compliance Information

---

Map ID#: <b>1A</b>	Distance (mi): <b>0.000000</b>	Name: <b>BO'S GROCERY</b>	
EPA ID#: <b>KYR000017889</b>	Direction: <b>-</b>	Address: <b>ROUTE 30</b>	
Status: <b>RCRA Notifier (Former RCRA Site)</b>		City, State, Zip: <b>BOONEVILLE</b>	<b>KY 41314</b>
Land Type: <b>Private Land</b>		SIC Code: <b>5541</b>	
		Contact Name: <b>HAROLD BARRETT</b>	
		Contact Phone: <b>606-593-5822</b>	

---

### RCRA Evaluation / Violation / Enforcement Data

**No Compliance Information Reported**

---

### RAATS (RCRA Administrative Action Tracking System) Data

**No RAATS Information Reported for this Site**

---

### RCRA Corrective Action Data (CORRACTS) Instrument and Event Data

**No Corrective Action Instrument Information for this Site**

---

# Kentucky UST Data

## Kentucky Registered Underground Storage Tank Data

Map ID#: **1B** Distance (mi): **0.00000**  
 Agency ID: **1202095** Direction: **-**  
 Owner: **Not Reported** Name: **BO'S GROCERY**  
 Owner Address: **Not Reported** Address: **HWY 30**  
 City, State Zip: **BOONEVILLE, KY 41314** City, State Zip: **VINCENT, KY 41386**

<u>TankID#</u>	<u>Tank Status</u>	<u>Composition</u>	<u>Substance</u>	<u>Capacity</u>	<u>Install Date</u>	<u>Removal Date</u>	<u>Closure Date</u>
1	Removed/Verified	Steel	Diesel	2000	1/1/65	7/8/98	Not Reported
Rel Det: Manual Tank Gauging Ovr Prot: Automatic Shutoff Device							
Pip Mat: Steel Pip Type: Suction							
2	Removed/Verified	Steel	GAS	2000	1/1/82	7/8/98	Not Reported
Rel Det: Manual Tank Gauging Ovr Prot: Automatic Shutoff Device							
Pip Mat: Steel Pip Type: Suction							
3	Removed/Verified	Steel	GAS	1000	1/1/82	7/8/98	Not Reported
Rel Det: Manual Tank Gauging Ovr Prot: Automatic Shutoff Device							
Pip Mat: Steel Pip Type: Suction							
4	Temp Closed	Steel	GAS	280	1/1/01		Not Reported
Pip Mat: Steel Pip Type: Suction							

Map ID#: **2** Distance (mi): **0.00000**  
 Agency ID: **9999652** Direction: **-**  
 Owner: **Not Reported** Name: **ROBERTS PROPERTY**  
 Owner Address: **Not Reported** Address: **HWY 30**  
 City, State Zip: **BOONEVILLE, KY 41314** City, State Zip: **BOONEVILLE, KY 41314**

<u>TankID#</u>	<u>Tank Status</u>	<u>Composition</u>	<u>Substance</u>	<u>Capacity</u>	<u>Install Date</u>	<u>Removal Date</u>	<u>Closure Date</u>
1	Not Reported	Steel	GAS	1000	1/1/65		Not Reported
Pip Mat: Steel Pip Type: Suction							
2	Not Reported	Steel	GAS	560	1/1/65		Not Reported
Pip Mat: Steel Pip Type: Suction							



## Unmappable Sites

A limitation of many records of governmental databases is incomplete or incorrect address information. Without proper addresses, it is more difficult to locate and map these sites.

Instead of leaving these potentially important sites out of the EcoSearch report, we implement a painstaking manual geocoding strategy aimed at plotting these unmappable sites by looking at zip codes, city names, and county names identified with the radius around your study site. The zip codes, cities, and counties searched are identified on the EcoSearch Statistical Overview page.

Our sophisticated mapping software, enhanced TIGER street maps, and address correction database processing methods find and plot most environmental sites. We then perform manual geocoding, plotting those sites the computer fails to find using a variety of resources. These include using our in-house collection of paper maps, directories, cross-referencing database information, and calling post offices, local government, or the sites themselves to accurately locate environmental records. We also correct obvious TIGER street map errors and omissions.

This effort at manual geocoding results in a short or non-existent orphan/unmappable list and increases accuracy and reliability of the data in our reports. We have elected not to computerize this part of our report due to the importance of presenting all data as completely and accurately as humanly possible. When this function is computerized it is impossible to produce a report as accurate as one where manual geocoding has taken place.

The limited number of sites which could not be reasonably found through our geocoding strategy are presented in this section for further review to assess their impact on your study site.

After the summary unmappable site information, detailed data follows.

## Unmappable Sites

<u>Database</u>	<u>Agency ID#</u>	<u>Site Name and Address</u>	<u>County</u>
SWF Kentucky Solid Waste Facility	055-00007	VICKERS ENTERPRISE INC PO BOX 53 TYNER, KY 40486-0053	JACKSON

---



# Kentucky SWF Data

## Kentucky Solid Waste Facilities Data

---

Map ID#: **1UN**      Distance (mi): **0.00000**  
Direction:

Permit ID: **055-00007**

Owner Name: **VICKERS ENTERPRISE INC**  
Owner Address: **P O BOX 53**  
Owner City, St, Zip: **TYNER, KY 40486**  
Owner Phone: **6063843549**

County: **JACKSON**

---

<u>Facility Type</u>	<u>Facility Status</u>	<u>Activity Type</u>	<u>Activity Status</u>	<u>Contact</u>	<u>Phone</u>
<b>RECYCLER (</b>	<b>APPLICATION APPROVED</b>	<b>RECYCLER (BIOREMEDIATION)</b>	<b>ACTIVITY APPROVED</b>	<b>RANDALL VICKERS</b>	<b>6063843549</b>

---

# Environmental Glossary

## Acid

A large class of substances having a pH less than seven. An acid waste is considered hazardous when the pH is 2.0 or less.

## Acute Effect

An adverse effect on a human or animal body, with severe symptoms developing rapidly and coming quickly to a crisis.

## Acute Exposure

A dose that is delivered to the body in a single event or in a short period of time.

## Aerobic

Occurring in the presence of free oxygen.

## Alkaline

A substance with a pH between 7 and 14. An alkaline waste is considered hazardous when its pH is 12.5 or greater.

## Ambient

Existing conditions of air, water, and other media at a particular time.

## Anaerobic

Occurring in the absence of oxygen.

## Assessment

An analysis or examination.

## Background Environmental Sample

Samples that are considered to contain no contaminants or known concentrations of contaminants.

## Base

A substance which forms a salt when reacted with an acid. Bases have a pH of greater than seven.

## Buffer Zone

An area of land which surrounds a hazardous waste facility and on which certain land uses and activities are restricted to protect the public health and safety and the environment from existing or potential hazards caused by the migration of hazardous waste (CH&SC Sec. 25110.3).

## Carcinogen

A substance or agent capable of causing or producing cancer in mammals.

## Caustics

A large class of substances which form solutions having a high pH.

## Chronic Effect

An adverse effect on a human or animal body, with symptoms which develop slowly over a long period of time or which reoccur frequently.

## Chronic Exposure

Low doses repeatedly received by the body over a long period of time.

## Combustible

A term used by the NFPA, DOT, and others to classify certain liquids that will burn, on the basis of flash points. Both the NFPA and DOT generally define "combustible liquids" as having a flash point of 100° F or higher.

## Concentration

The relative amount of a substance when combined or mixed with other substances.

## Contingency Plan

A document setting out an organized, planned, and coordinated course of action to be followed in case of a fire or explosion or release of a hazardous waste from a TSD or a generator's facility that could threaten human health or the environment (RCRA).

## Corrosive

As defined by DOT, a corrosive material is a liquid or solid that causes visible destruction or irreversible alterations in human skin tissue at the site of contact or in the case of leakage from its packaging a liquid that has a severe corrosion rate on steel. A solid or liquid which exhibits these characteristics can be regulated as hazardous waste.

## Decomposition

Breakdown of material or substance (by heat, chemical reaction, electrolysis, decay, or other processes) into elements or simpler compounds.

## Decontamination

The process of removing contaminants from individuals and equipment.

## Deep Well Injection

Disposal of wastes by injecting them into a geological formation deep in the ground, sometimes after pretreatment to avoid solidification.

## EPA ID Number

This unique number assigned by EPA to each generator, transporter, or TSD.

## Effluent

Waste material, either treated or untreated, discharged into the environment.

## Environmental Assessment

The measurement or prediction of the transport, dispersion, and final location of a hazardous substance when released into the environment.

## Environmental Emergencies

Incidents involving the release (or potential release) of hazardous materials into the environment which require immediate remedial action.

## Environmental Hazard

A condition capable of posing risk of exposure to air, water, soil, plants, or wildlife.

## Exception Report

A report that generators who transport waste off-site must submit if they do not receive a properly completed copy of their manifest within 45 days of the date on which the initial transporter accepted the waste.

## Generator

The person or facility who, by nature or ownership, management or control, is responsible for causing or allowing to be caused, the creation of hazardous waste.

## Glovebag

A device used to remove a section of pipe insulation without isolating the entire space or room.

## Groundwater Hydrology

The study of the movement of water below the earth's surface.

## Hazard

A circumstance or condition that can cause harm. Hazards are often categorized into four groups: biological, chemical, physical, and radiation.

## Hazard Classes

A series of nine descriptive terms that have been established by the UN Committee of Experts to categorize the hazardous nature of chemical, physical, and biological materials. These categories are: flammable liquids, explosives, gases, oxidizers, radioactive materials, corrosives, flammable solids, poisonous and infectious substances, and dangerous substances.

## Hazardous Waste

Any material that is subject to the hazardous waste manifest requirements of the EPA specified in the CFR, Title 40, Part 262 or would be subject to these requirements in the absence of an interim authorization to a State under CFR, Title 40, Part 123, Subpart F.



### **Heavy Metals**

Certain metallic elements having a high density and generally toxic, e.g., lead, silver, mercury, and arsenic.

### **Immediate Removal**

Actions undertaken to prevent or mitigate immediate and significant risk of harm to human life or health or the environment. As set forth in the National Contingency Plan, these actions shall be terminated after \$1 million has been obligated or six months have elapsed from the date of initial response.

### **Incident**

The release or potential release of a hazardous substance into the environment.

### **Inert**

Exhibiting no chemical activity; totally unreactive.

### **Innocent Land Owner's Defense**

The defense of a purchaser of real property that he or she exercised due diligence in having hazards assessed prior to purchase.

### **Interim Status**

Allows owners and operators of TSDs that were in existence, or for which construction had commenced, prior to November 19, 1980 to continue to operate without a permit after this date pending final issuance from RCRA.

### **Joint and Several Liability**

Under federal law each party that contributed to damages may be held liable for all damages, but each has the right to compel the others to contribute and indemnify.

### **Liability**

Being subject to legal action for one's behavior.

### **MSDS Material Safety Data Sheet**

Required by OSHA of owners to alert employees to hazards, their effect, and protective action.

### **Manifest**

Form which indicates generator, quantity, and type of waste for each shipment of hazardous wastes disposed in off-site facilities.

### **National Contingency Plan**

Policies and procedures that the Federal Government follows in implementing responses to incidents involving hazardous substances.

### **P Wastes**

A federal waste list comprised of substances categorized as acutely hazardous.

### **Part A**

The first part of a two part application that must be submitted by a TSD to receive a permit. It contains general facility information.

### **Part B**

The second part of a two part application that must be submitted by a TSD to receive a permit. It contains highly technical and detailed information.

### **Planned Removal**

The removal of released hazardous substances from the environment within a non-immediate, long term time period. Under CERCLA: Actions intended to minimize increases in exposure such that time and cost commitments are limited to six months and/or \$1 million.

### **Poison, Class A**

A DOT term for extremely dangerous poisons, that is, poisonous gases or liquids of such nature that a very small amount of the gas, or vapor of the liquid, mixed with air is dangerous to life. Some examples: phosgene, cyanogen, and hydrocyanic acid.

### **Poison, Class B**

A DOT term for liquid, solid, paste, or semisolid substances, other than Class A poisons, which are known to be toxic to man as to afford a hazard to health during transportation.

### **Pollutant**

A substance or mixture which after release into the environment and upon exposure to any organisms will or may reasonably be anticipated to cause adverse effects in such organisms and their offspring.

### **Priority Pollutants**

A list of chemicals selected from the list of toxic pollutants by the EPA as priority toxic pollutants for regulation under the Clean Water Act.

### **Remedial Actions**

Responses to releases of hazardous substances on the NPL that are consistent with a permanent remedy which would prevent or mitigate the migration of materials into the environment.

### **Risk**

The probability that an unwanted event will occur.

### **Second Responders**

Those personnel required to assist or relieve first responders at a hazardous material incident due to their specialized knowledge, equipment, or experience. These include State environmental protection or health officials, commercial response, cleanup companies, and appropriate industry representatives.

### **Strict Liability**

Holds a party responsible for damages irrespective of the amount of care taken in handling a hazardous substance.

### **Subtitle C**

The part of RCRA which pertains to the management of hazardous waste.

### **Subtitle I**

The part of RCRA which pertains to the storage of petroleum products and hazardous substances, other than wastes, in USTs.

### **Superfund**

See CERCLA.

### **Synergistic**

The action of two materials together which is greater in effect than the sum of the individuals actions.

### **TIGER Files**

The US Census Bureau's TIGER files provide a nationwide computerized map with address range information.

### **Tort**

A legal wrong, sometimes referred to as negligence.

### **Toxicity**

The ability of a substance to produce injury by non-mechanical means once it reaches a susceptible site in or on the body.

### **U Wastes**

A federal list of hazardous wastes which consists of substances deemed to be hazardous for hazards other than acute hazards.

## Acronyms and Abbreviations

-AIRS	Aerometric Information Retrieval System
-AST	Aboveground Storage Tank
-ASTM	American Society for Testing and Materials
-BLM	Bureau of Land Management
-BNA	Bureau of National Affairs
-CAA	Clean Air Act
-CDC	Centers for Disease Control
-CERCLA	Comprehensive Environmental Response, Compensation, and Liability Act of 1980
-CERCLIS	CERCLA Information System
-CICIS	Chemicals in Commerce Information System
-COE	U.S. Army Corps of Engineers
-CWA	Clean Water Act
-DDT	Dicholoro-diphenyl-dichloroethane
-DOC	Department of Commerce
-DOCKET	Enforcement Docket System--Office of Enforcement and Compliance Monitoring
-DOE	Department of Energy
-DOT	Department of Transportation
-EPA	Environmental Protection Agency
-ERCS	Emergency Response Cleanup Services
-ERNS	Emergency Response Notification System
-ESA	Environmental Site Assessment
-FIFRA	Federal Insecticide, Fungicide, and Rodenticide Act
-FINDS	Facility Index System
-FOIA	Freedom of Information Act
-FWPCA	Federal Water Pollution Control Act
-HHS	Department of Health and Human Services
-HSWA	Hazardous and Solid Waste Amendments of 1984
-HUD	Department of Housing and Urban Development
-LUST	Leaking Underground Storage Tank
-MSDS	Material Safety Data Sheet
-NEPA	National Environment Policy Act
-NESHAP	National Emission Standards for Hazardous Air Pollutants
-NFRAP	No Further Remedial Action Planned (Delisted CERCLA Site)
-NOI	Notice of Intent
-NOV	Notice of Violation
-NPDES	National Pollution Discharge Elimination System
-NPL	National Priorities List
-NRC	Nuclear Regulatory Commission
-NRIS	Nuclear Regulatory Information System
-OSHA	Occupational Safety and Health Administration



## Acronyms and Abbreviations

-PADS	PCB Activity Database System
-PCB	Polychlorinated Biphenyls
-POTW	Publicly-Owned Treatment Works
-PPM	Parts Per Million
-PRP	Potentially Responsible Parties
-RAATS	RCRA Administrative Action Tracking System
-RCRA	Resource Conservation and Recovery Act of 1976
-RCRIS	Resource Conservation and Recovery Information System
-RFA	RCRA Facility Assessment
-RFI	RCRA Facility Investigation
-RI	Remedial Investigation (CERCLA)
-SARA	Superfund Amendments and Reauthorization Act of 1986
-SCS	Soil Conservation Service
-SDWA	Safe Drinking Water Act
-SETS	Superfund Enforcement Tracking System
-SSTS	Section Seven Tracking System
-SWF/LF	Solid Waste Facilities / Landfills
-TIGER	Topologically Integrated Geographic Encoding and Referencing System
-TRI	Toxic Release Inventory
-TSCA	Toxic Substances Control Act
-TSD	Treatment, Storage, or Disposal Facility
-USDA	U.S. Department of Agriculture
-USGS	U.S. Geological Survey
-UST	Underground Storage Tank
-WWTP	Wastewater Treatment Plant